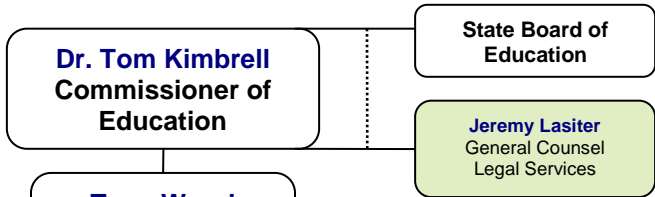




ARKANSAS DEPARTMENT OF EDUCATION



Tony Wood
Deputy
Commissioner

William (Bill) Goff
Assistant Commissioner
Division of Fiscal & Administrative Services

- Internal/External Agency Finance
- APSCN Financial Applications
- APSCN Student Applications
- Child Nutrition Services
- Fiscal Distress Services
- LEA Federal Funding Services
- LEA State Funding, Loans and Bonds
- Financial Accountability & Reporting

Beverly Williams
Assistant Commissioner
Division of Human Resources

- Professional Licensure / Non-Traditional Licensure
- Teacher Quality
- Recruitment and Retention
- Professional Licensure Standards Board
- ADE Employee Induction
- Central Support

Jim Boardman
Assistant Commissioner
Division of Research and Technology

- Data Administration and Reporting (CSPR)
- Data Quality
- Technology Resources
- Network and Desktop Support
- State Data Warehouse (APSCN)

Dr. Charity Smith
Assistant Commissioner
Division of Academic Accountability

- Standards Assurance Monitoring
- Desegregation Monitoring / Equity
- School Performance Gains Model AYP Report Card
- Monitoring State/Federal

Dr. Laura Bednar
Assistant Commissioner
Division of Learning Services

- Statewide System of Support
- School Planning and Improvement
- Professional Development
- ERZ/ Scholastic Audit
- Special Education
- Curriculum & Assessment
- ALE
- Charter/ Home Schools
- Gifted & Talented
- Guidance/ School Counseling
- Migrant Education
- Coordinated School Health
- SI Grants
- Federal Programs
 - Title I
 - Title IV
 - Title V1
 - McKinney-Vento
 - 21st CCLC
 - Even Start

Susan Harriman
Director
Policy Special Projects

Michelle Griffin
Director
Legislative Services

Seth Blomeley
Director
Communications

ADE	Arkansas Department of Education
ALE	Alternative Learning Environment
APSCN	Arkansas Public School Computer Network
AYP	Adequate Yearly Progress
CCLC	Century Community Learning Centers
DLS	Distance Learning Services
ERZ	Education Renewal Zones
LEA	Local Education Agency
CSPR	Consolidated State Performance Report
SES	Supplemental Educational Services
SI	School Improvement